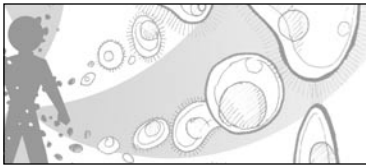


SOLIPSI



VISION



OBSSESSIONS

Obsession	score	Ticks	Un-ticks

LIMITATIONS

Limitation	score	Ticks	Un-ticks

Character Generation

1. Vision
2. Five Obsessions (9 pts)
3. Five Limitations (9 pts)
4. Infestation (5), Tears (0)

Changing Reality: Difficulty: 3 (or 5); Contradictions: +1 or +2; Shadow Tokens: +2 each; +Shadow Strength if opposing directly; Reduce by Obsessions; Increase by Limitations; Spend Infestation. +ve *Fail* (Tick Lim., Unticks?, Taint?), o *Perfect* (Tick Obs., player narrates), -ve *Overshoot* (Tick Obs., gain Tear, gain Infestation, Shadow twists?)